



# US NAVY CIVIL ENGINEER CORPS

---

ENGINEERS AND ARCHITECTS

MAKING A DIFFERENCE AROUND THE GLOBE



# US NAVY'S CIVIL ENGINEER CORPS COLLEGIATE PROGRAM



## DUTIES & COMMITMENT

Prior to graduation:

- ❖ Maintain 2.7 or better GPA
- ❖ Complete a Physical Fitness test 2x per year

Post Graduation:

- ❖ Participate in Commissioning Officer Program\*
- ❖ Attend Officer Candidate School in Newport, RI
- ❖ Four (4) years active duty service and four (4) years Inactive Reserve (recalled only in the event of national emergency)

\*Local recruiting station dependent



## SALARY AND BENEFITS

- ❖ Earn **\$4,314/month\*** (Avg) w/promotion opportunities, for up to 2 years before graduation
- ❖ No Haircut, No Uniform, No Drill
- ❖ Time in program counts towards retirement (20 years\*\*)
- ❖ Medical & Dental Insurance
- ❖ Base Access

\*Based on varying locality pay

\*\*Must attain rank of LCDR (O-4)

# \*\*\*EARN \$4,314/MONTH\*\*\*

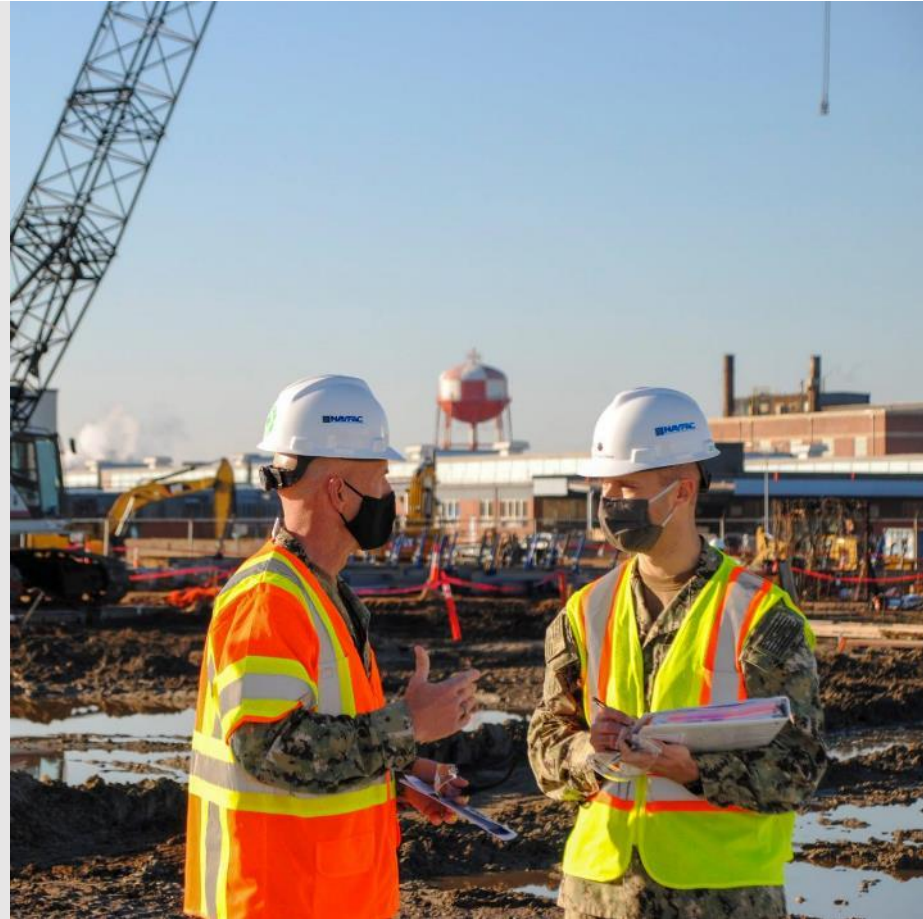


# APPLICATION REQUIREMENTS

## MINIMUM REQUIREMENTS

- ❖ 19-36 years old\*
- ❖ 2.7 GPA
- ❖ U.S. Citizen
- ❖ ABET EAC degree or NAAB Architecture degree

\*At time of commissioning; may receive a waiver up to 54 years old.

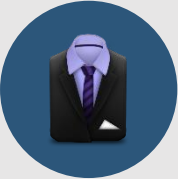


## HOW TO UP YOUR GAME

- ❖ Ideal GPA and certifications
  - ❖ High GPA, especially STEM courses
  - ❖ EIT/NCARB or PE/RA
- ❖ Extra-curricular activities/Leadership
  - ❖ Campus/Engineering organizations
  - ❖ Intramurals or varsity sports
  - ❖ Community involvement
- ❖ Employment
  - ❖ Part-time job while in school
  - ❖ Engineering internships or CO-OPs
- ❖ Character
  - ❖ Great leadership potential
  - ❖ Confidence
  - ❖ Communication skills
  - ❖ True desire to serve in CEC



# COMPARISON TO CIVILIAN INDUSTRY



## CIVILIAN INDUSTRY

\$90k avg/yr; all taxable; no guaranteed upward mobility/pay increase

Negotiated at hiring

Entry level: low complexity, low budget projects; planning and estimating, CAD, no leadership

Serving investors and profit margins

Routine work, minimal variety in tasking



←	<b>SALARY</b>	→
←	<b>BENEFITS</b>	→
←	<b>LEADERSHIP/EXPERIENCE</b>	→
←	<b>PURPOSE</b>	→
	<b>DYNAMIC WORKLOAD</b>	



## CIVIL ENGINEER CORPS

\$64k starting salary; 37% of gross pay is tax free; standard regular pay raises, make \$100k+ within 4 years

401K matching\*, Healthcare for dependents; Pension/healthcare for life including spouse

Leading sailors and civilians, large scale budgets, diverse & complex projects

Serving your nation, stewards of taxpayer's dollars, and help those in need at home and abroad

Diversity of daily schedule, tasking, & location; Expeditionary opportunities and field experience

\*Up to 5%

# WHAT IS THE CIVIL ENGINEER CORPS?



## NAVAL OFFICERS

- ❖ Tactical Professional
  - ❖ Leader/Mentor
- ❖ Upstanding Citizen



## ENGINEERING/ARCHITECTURE PROFESSIONALS

- ❖ Licensed PEs and RAs
- ❖ Continuous Technical Education
- ❖ Building Professional Experience



## BUSINESS PROFESSIONALS

- ❖ Federal Contracting Authority
- ❖ Budget/Organizational Management
- ❖ Risk Management/Business Analytics



# WHAT WILL YOU DO IN THE CEC?

## FACILITIES MANAGEMENT (54%)

FM

- ❖ Base operations, planning and maintenance
- ❖ Construction, contracting and real estate
- ❖ Utilities and environmental

## STAFF / JOINT/TRAINING (27%)

STF

- ❖ Instructor, trainee, & PG school
- ❖ Inter-service/agency
- ❖ Accessions and detailer

EXP

## EXPEDITIONARY (19%)

- ❖ Contingency engineering
- ❖ Humanitarian assistance
- ❖ Disaster relief



# FACILITIES MANAGEMENT

Base Operations, Planning and Maintenance

Construction Contracting and Real Estate

Utilities and Environmental Stewardship



# FACILITIES MANAGEMENT

FM

## ❖ Base Operations, Planning and Maintenance

- ❖ Interface with customers on base and manage all client requests
- ❖ Cradle to grave project management with emphasis on project scope preparation
- ❖ Development and implementation of maintenance action plans
- ❖ Manage base transportation department

## ❖ Construction, Contracting and Real Estate

- ❖ Project management of construction contracts
- ❖ Contracting officer's technical representative
- ❖ Acquisition and zoning of land

## ❖ Utilities and Environmental

- ❖ Development, implementation and compliance of environmental policy
- ❖ Operation and sustainment of base utility network



# EXPEDITIONARY

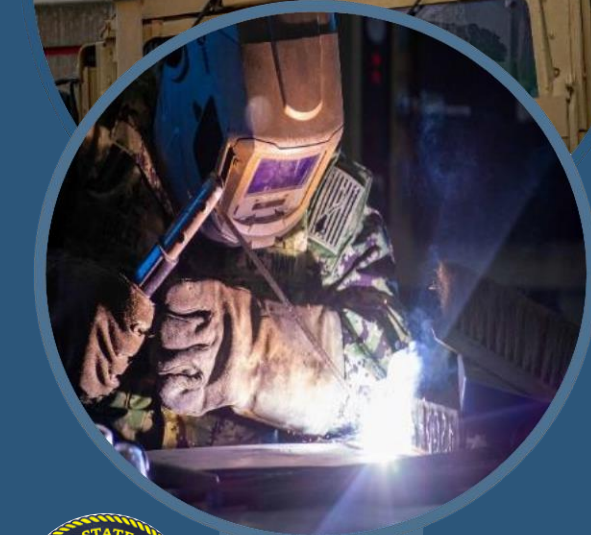
U.S. Navy Seabees

USMC Engineer Support

SPECWAR Logistics Support

CONSTRUCTION

BATTALIONS



# EXPEDITIONARY

EXP

## ❖ Seabees

- ❖ The Navy's deployable construction force in support of contingency construction, disaster relief and humanitarian assistance
- ❖ Junior officers lead Seabees in the execution of projects all over the world
  - ❖ Construct/maintain camps
  - ❖ Improve beaches
  - ❖ Bridge/road/airfield construction/repair
  - ❖ Build Schools
  - ❖ Water well drilling
  - ❖ Convoy operations
  - ❖ Underwater construction/repair

## ❖ USMC Engineer Support

- ❖ Liaising w/USMC units for joint employment of combat construction and logistics forces

## ❖ SPECWAR Logistics Support

- ❖ Integration and deployment w/special warfare units leading imbedded construction and logistics personnel.



# STAFF, JOINT, & SPECIAL DUTY

Instructor and Aide

Inter-service/agency

Accessions and Detailer



# STAFF, JOINT, & SPECIAL DUTY

STF

## ❖ Instructor

- ❖ Provide initial and follow-on training to CEC officers and NAVFACSYSCOM civilians all over the world

## ❖ Executive Assistant/Admiral's Aide

- ❖ Coordinate the schedule and travel of high ranking officers and civilians; providing a unique window into top level decision making and mentoring

## ❖ Inter-Service/Agency Support

- ❖ White House, Naval Observatory (VP residence), & Camp David
- ❖ Pentagon Plans and Policy
- ❖ State Department
  - ❖ Travel to every US Foreign Embassy during your tour while supporting the Seabees stationed there

## ❖ Accessions/Detailers

- ❖ Shape the future of the CEC
- ❖ Facilitate personnel rotations through facility management, expeditionary and staff positions.



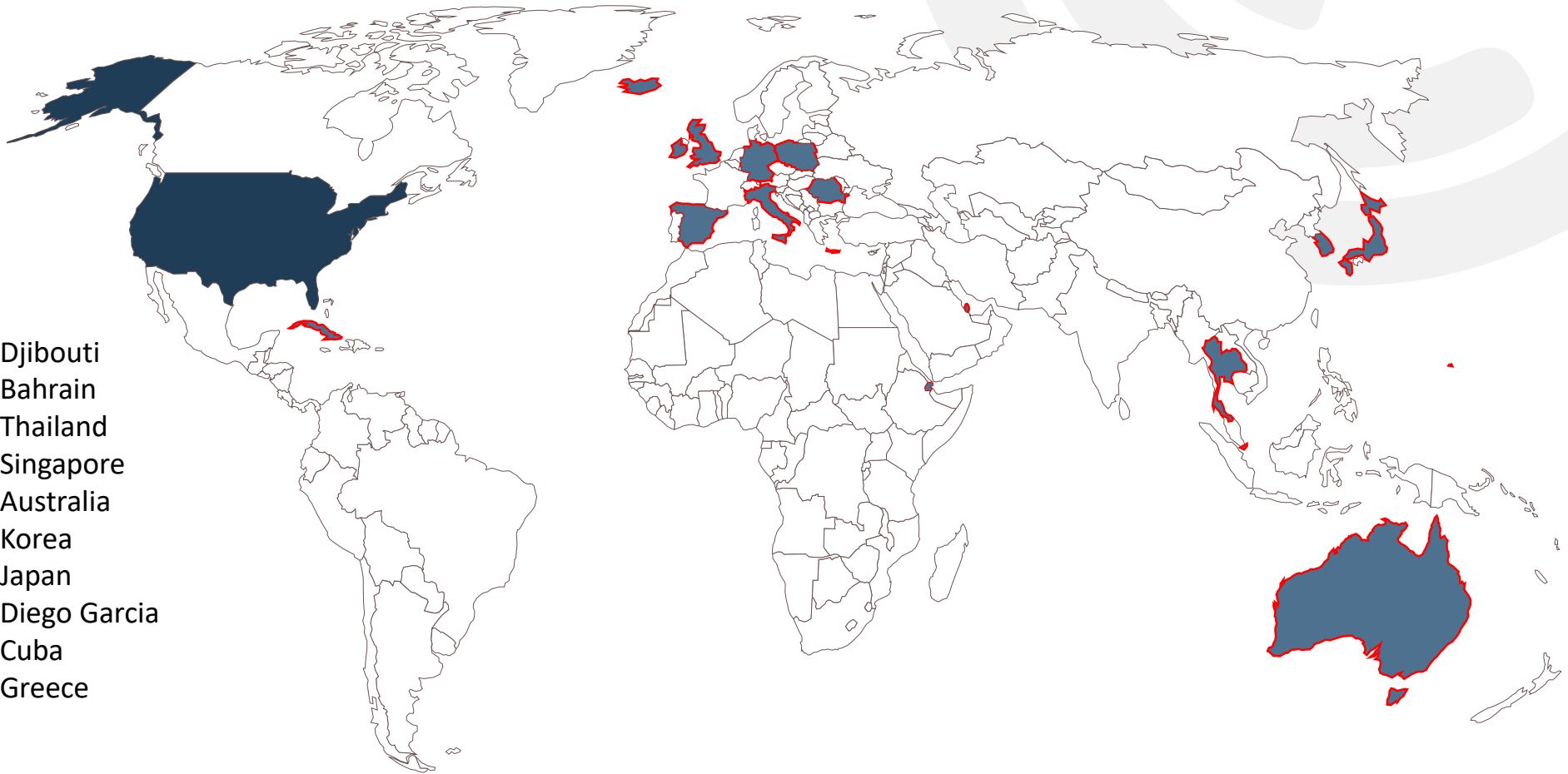
# WHERE YOU COULD BE STATIONED

## USA\*

- ❖ Pearl Harbor, HI
- ❖ Key West, FL
- ❖ Washington, DC
- ❖ New Orleans, LA
- ❖ Norfolk, VA
- ❖ San Diego, CA
- ❖ Philadelphia, PA
- ❖ Guam
- ❖ Port Hueneme, CA\*\*
- ❖ Gulfport, MS\*\*

## International

- |               |                |
|---------------|----------------|
| ❖ Iceland     | ❖ Djibouti     |
| ❖ Netherlands | ❖ Bahrain      |
| ❖ Spain       | ❖ Thailand     |
| ❖ Belgium     | ❖ Singapore    |
| ❖ UK          | ❖ Australia    |
| ❖ Germany     | ❖ Korea        |
| ❖ Italy       | ❖ Japan        |
| ❖ Poland      | ❖ Diego Garcia |
| ❖ Romania     | ❖ Cuba         |
| ❖ Italy       | ❖ Greece       |



\*Includes all USN and USMC installations

\*\*Locations that you are likely to serve in your first 6 years.



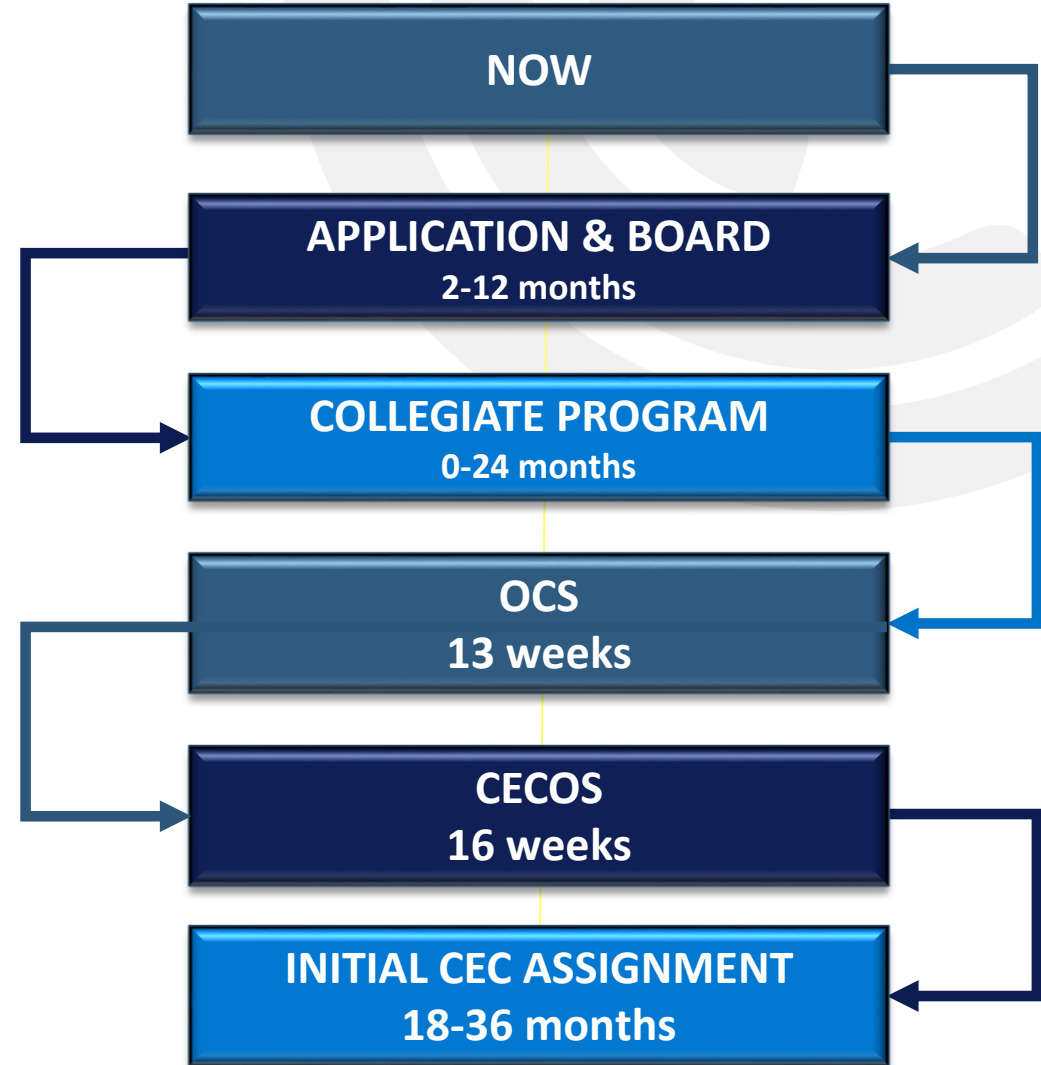
# Application & Training Pipeline

## ❖ Officer Candidate School (OCS)

- ❖ 13 weeks
- ❖ Newport, RI
- ❖ Naval Officer Indoctrination

## ❖ CEC Officer School (CECOS)

- ❖ 16 weeks
- ❖ Port Hueneme, CA
- ❖ Classroom Atmosphere



# BENEFITS & LICENSURE



## LICENSURE

- ❖ All officers are required to get their Professional Engineering (PE) License or become a Registered Architect (RA) for career progression.\*
- ❖ Senior officers or civilians in your command will be able to assist in signing off on experience gain keeping you on pace with your peers in civilian industry

\*Recommended at O-4; Required at O-5



## BENEFITS

Once commissioned as a CEC officer:

- ❖ **Within 4 years earn +\$100k\***
- ❖ 30 days paid vacation per year
- ❖ Post 9/11 GI Bill
  - ❖ Sends you/kids/spouse to college
- ❖ Medical & Dental Insurance
- ❖ 401k and Pension\*\*
- ❖ Veteran status after 2 years of service

\*Gross

\*\*After attaining rank of LCDR (O-4) and 20 years of service



# GRADUATE EDUCATION

## ❖ The Navy will send you to get a masters degree at civilian institutions or the Naval Post Graduate School\*

- ❖ After 7-10 years of service
- ❖ Tuition is covered
- ❖ Maintain full salary and benefits
- ❖ Full time job is school
- ❖ Required for career progression

## ❖ Degrees offered

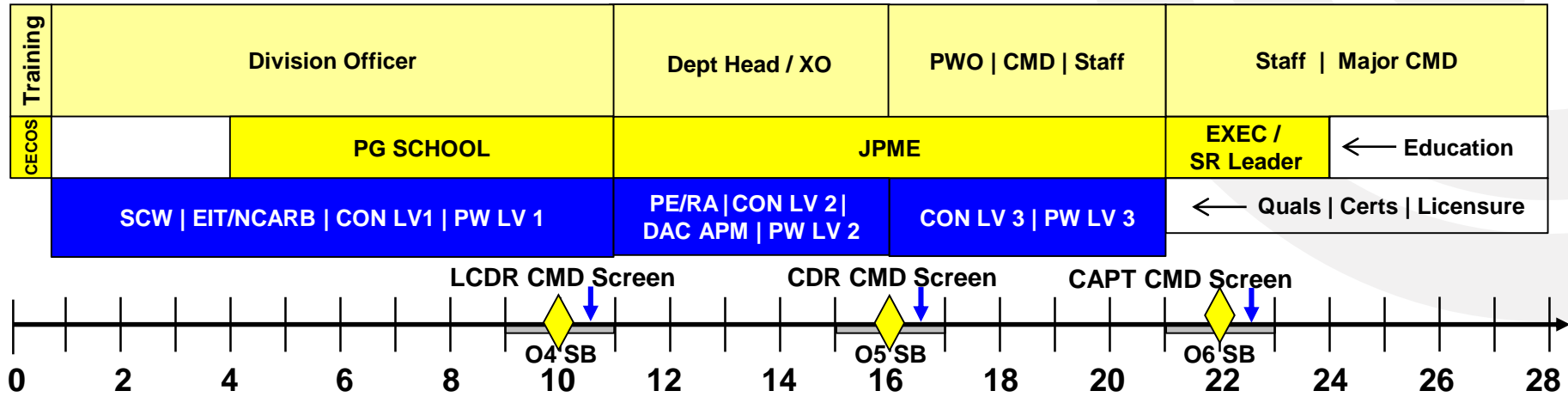
- ❖ Civil : Construction, Structural, Environmental, Geotechnical, Public Works and Planning
- ❖ Mechanical: Shore Facilities and Energy Management
- ❖ Electrical Engineering
- ❖ Ocean Engineering
- ❖ **Controlled Enrollment**
  - ❖ MBA Program
  - ❖ Urban Planning and Development
  - ❖ Prestige Universities (Carnegie Mellon, MIT, Stanford)
  - ❖ Purdue Military Research Development



\*Additional 3 yr service commitment

# CAREER PROGRESSION

## Career Path



### TYPICAL FACILITIES MANAGEMENT, ACQUISITION, AND STAFF BILLETS

Project Engineer Construction Manager Assistant PWO	Camp David XO FEAD Director Production Asst OPS   APWO Staff	Camp David CO PWO   ARE Field Engineering Command OPS / XO Staff / PPBE	FEC/EXWC/OICC/CSFE/CBC CO DC Staff LANT/PAC/FEC Staff Comb Cmd/FLT/USMC/HQ Staff
---	--	---	---

### TYPICAL EXPEDITIONARY BILLETS

Platoon Commander Detail OIC Company Commander	CBMU/UCT CO NMCB S7/S3/XO ACB B6/S7 Exped Staff	NMCB/NCTC CO ACB S3/XO NCG/NCR Staff NECC/CTF Staff	NCG/NCR/ACB CO Navy / USMC / Expeditionary Staff
--	--	--	---

No Golden Path: CEC Career requires balanced experience



# LIFE AFTER THE NAVY

## ❖ CEC Officers are heavily recruited for:

- ❖ Leadership experience
- ❖ Managerial skills
- ❖ Communication
- ❖ Problem Solving
- ❖ Professional qualifications (PE/RA, MS, PMP, CEM, Contracting)

## ❖ Navy CEC jobs directly relate to civilian jobs:

- ❖ Executive positions in the construction/corporate sector
- ❖ Management of city, university, airport, and corporate facilities/installations
- ❖ Government contracting/acquisition
- ❖ Disaster response
- ❖ Federal employment
- ❖ Law enforcement



# CEC RESERVE OFFICER

AS A CIVIL ENGINEER IN AMERICA'S NAVY RESERVE, YOU'LL SEE HOW A PART TIME COMMITMENT CAN RETURN A LIFETIME OF RESULTS. TAKE ADVANTAGE OF THE SAME TRAINING AND OPPORTUNITIES AS YOUR ACTIVE DUTY COUNTERPARTS.



## REQUIREMENTS

- ❖ You are deployable world-wide in support of current operations
- ❖ Annual training conducted mainly in Gulfport, MS or Port Hueneme, CA
- ❖ Must be a college graduate
- ❖ EIT or PE/RA desired
- ❖ Demonstrated performance in civilian career
- ❖ Solid references, strong GPA, active membership in professional organizations desired
- ❖ Be at least 19, but not yet 42 at time of appointment
- ❖ U.S. citizen
- ❖ Meet Navy medical and physical standards



## BENEFITS

- ❖ Drill one weekend a month, Annual Training two weeks out of the year
- ❖ Drill at Navy Reserve Support Unit close to place of residence
- ❖ Special Pay Incentives for officers possessing certain in-demand skills sets
- ❖ Military commissary and Navy Exchange privileges
- ❖ Low cost insurance options
- ❖ Receive basic pay for days drilling or training
- ❖ Retirement after 20 qualifying years of service
- ❖ Similar training and job duties as active counterparts



FIND AN OFFICER RECRUITER NEAR YOU BY VISITING  
<https://www.navy.com/local>



# THANK YOU!

## CONTACT INFO

---



[ALEXANDER.J.BEDLEY.MIL@US.NAVY.MIL](mailto:ALEXANDER.J.BEDLEY.MIL@US.NAVY.MIL)



(901) 874-4383



[WWW.CEC.NAVFAC.NAVY.MIL](http://WWW.CEC.NAVFAC.NAVY.MIL)

